

## West Hartford Public School District

**Agenda Item:** High School Advanced Placement (AP) Test Score Results

**Meeting Date:** October 1, 2013

**From:** Nancy DePalma, Assistant Superintendent for Curriculum, Instruction and Assessment  
Paul Vicinus, Director of Secondary Education  
Chip Ward, Director of Finance and Planning

**Through:** Karen L. List, Superintendent

### **Background:**

This report presents a detailed analysis of the results of West Hartford's high schools on the AP exams for the 2012-13 school year. Included herein are also the SAT/ACT results. A summary of the last 5 years of can be found at the end of the report.

Dr. DePalma, Mr. Vicinus and Mr. Ward will be available to answer questions.

### **Advanced Placement (AP) Scores:**

The attached tables summarize the results of the 2013 administration of AP exams. The AP program gives students the opportunity to pursue college-level studies while still in high school and to receive advanced placement, credit, or both in college. The courses are very challenging and provide the student an opportunity to learn a subject in depth, to develop analytical reasoning skills, and to form disciplined study habits that can contribute to continued success in college.

Each exam is scored on a 5-point scale, where a 5 represents the highest score possible and 1 is the lowest. Each individual college decides which AP exam grades they will accept for advanced placement and/or credit in which subject area; many accept 3 or above and most accept a score of 4 or 5.

2013 was another in a strong year for the AP Program in WHPS – we had a total of 1,035 students take 2,015 AP exams. That is an increase of 21 students and an increase of 32 exams from 2012's record levels. The participation rate, which is the total number of exam takers divided by the grade 11 and 12 enrollment, averaged 69.1% for the district, which was the highest it has ever been. In total AP exams were taken in 26 different subjects. The College Board's AP Equity and Excellence measure increased for the district to 59.1% - its highest ever. This measure is the percentage of the graduating class who earned a 3 on one or more AP exams.

**Conard Results:**

- 582 students took 1,115 exams. Average score was 3.15 and 70% received a 3 or higher
- Number of exam takers increased by 2%, and the participation rate was 77% - just below last years all-time high
- Number of exams increased 7%
- Most popular exam – English Language – 146 students, mostly juniors took exam, 73% received a 3 or higher
- 63.9% of the class of 2013 earned a 3 or higher on at least one AP exam (AP Equity and Excellence) according to the College Board’s data set – the highest ever and almost 10 percentage points higher than last year

**Hall Results:**

- 453 students took 827 exams. Average score was 3.52 and 79% received a 3 or higher
- Number of exam takers increased 2% and participation increased to 61.1% - the highest ever
- Number of exams decreased by 5%
- Most popular exam – Psychology – 137 students took exam, 64% received a 3 or higher
- 53.1% of the class of 2013 earned a 3 or higher on at least one exam (AP Equity and Excellence) according to the College Board’s data set.

A final note about average scores and percent of students earning a 3 or higher - this is the one area of test reporting where higher is not always better. It is easy to get high average scores on the AP exam – just limit the test takers to students who will score a 5. But enrollment in AP courses should be much more than getting a 5 on the exam. Many students, who will not get 5’s or 4’s or even 3’s on the exam can benefit from the challenging curriculum and content provided by these courses.

### 2013 AP Exam Results

| Exam               | Conard          |               | Hall                       |               |
|--------------------|-----------------|---------------|----------------------------|---------------|
|                    | Number of Tests | % 3 or higher | Number of Tests            | % 3 or higher |
| Art (All)          | 7               | 86%           | 19                         | 95%           |
| English Language   | 146             | 73%           | 52                         | 88%           |
| English Literature | 130             | 81%           | 44                         | 89%           |
| French Language    | 37              | 78%           | 24                         | 96%           |
| Spanish Language   | 51              | 96%           | 41                         | 100%          |
| Spanish Lit        | 16              | 100%          | 0                          | N/A           |
| Calculus AB        | 69              | 65%           | 58                         | 86%           |
| Calculus BC        | 22              | 91%           | 21                         | 100%          |
| Statistics         | 41              | 83%           | 18                         | 61%           |
| Comp Sci A         | 24              | 63%           | 10                         | 100%          |
| Biology            | 65              | 69%           | 48                         | 96%           |
| Chemistry          | 40              | 83%           | 39                         | 92%           |
| Physics B          | 37              | 78%           | 17                         | 88%           |
| Environ. Science   | 107             | 37%           | 38                         | 76%           |
| Econ. – Micro      | 36              | 50%           | 40                         | 80%           |
| Econ. – Macro      | 36              | 50%           | 40                         | 80%           |
| European History   | 34              | 82%           | 41                         | 78%           |
| US Govt & Politics | 65              | 77%           | 60                         | 67%           |
| US History         | 83              | 54%           | 72                         | 57%           |
| Psychology         | 139             | 73%           | 137                        | 64%           |
| Other exams taken  | Physics C (3)   |               | Chinese (1), Physics C (7) |               |
| <b>Totals</b>      | <b>1,188</b>    | <b>70%</b>    | <b>827</b>                 | <b>79%</b>    |

### AP Scholars

The College Board as part of its AP program recognizes students for excellence in both participation and scores on the students' AP exams. Students were recognized at Conard and Hall based on their cumulative results through the 2013 AP examinations.

| Level  | Conard | Hall |
|--|--------|------|
| <b>AP Scholar</b> – Students who have earned a 3 or higher on 3 AP exams   | 82     | 51   |
| <b>AP Scholar with Honor</b> – Students who have earned a 3 or higher on 5 AP exams and an average of at least 3.25 on all AP exams taken      | 35     | 24   |
| <b>AP Scholar with Distinction</b> – Students who have earned a 3 or higher on 5 AP exams and an average of at least 3.5 on all AP exams taken | 73     | 58   |
| <b>National AP Scholar</b> – Students who have earned a 4 or higher on 8 AP exams and an average of at least 4.0 on all AP exams taken         | 11     | 18   |

## UConn Early College Experience (ECE)

UConn Early College Experience (ECE) is an opportunity for students to take UConn courses while still at Conard or Hall. Every UConn ECE course is equivalent to the same course at the University of Connecticut. Courses are taught at Conard and Hall by teachers who have been certified as adjunct faculty members by the University of Connecticut. Our students earn UConn credits for a fraction of the cost (\$25 per credit) had the same course be taken on a college campus. Students must receive a grade of C or above to earn UConn ECE credit. While not all colleges and universities accept the UConn ECE credits, many do.

UConn ECE credits are offered in 15 courses combined across Conard and Hall including both AP courses and non-AP courses such as Discrete Math. The table below shows the total numbers of students who earned UConn ECE credit in the last 5 school years. The popularity of this option has almost doubled over the last five years.

| Course                   | 2008-09    | 2009-10    | 2010-11    | 2011-12    | 2012-13    |
|--------------------------|------------|------------|------------|------------|------------|
| Biology                  | 74         | 48         | 67         | 42         | 48         |
| Calculus AB              | 32         | 45         | 51         | 37         | 45         |
| Calculus BC              | 10         | 10         | 4          | 14         | 15         |
| Discrete Math*           | N/A        | 2          | 71         | 88         | 109        |
| Economics Macro          | 19         | 25         | 19         | 42         | 44         |
| Economics Micro          | 19         | 25         | 19         | 43         | 40         |
| English Language         | 27         | 28         | 52         | 122        | 82         |
| English Literature       | 44         | 56         | 67         | 61         | 54         |
| Environmental Science    | 10         | 18         | 37         | 45         | 75         |
| European History         | 5          | 12         | 32         | 15         | 0          |
| French Language          | 9          | 9          | 5          | 0          | 0          |
| Ind. Family Development* | 28         | 63         | 63         | 37         | 21         |
| Physics B                | 7          | 6          | 6          | 2          | 10         |
| Spanish Language         | 15         | 24         | 15         | 23         | 21         |
| Statistics               | 36         | 51         | 27         | 35         | 39         |
| <b>Total Tests</b>       | <b>335</b> | <b>422</b> | <b>539</b> | <b>606</b> | <b>603</b> |

\* No AP Exam in this course

**Performance on the Board Performance Indicator:**

The Board Performance Indicator states that 70% of high school graduates who enter high school as 9th graders will successfully complete at least 1 Advanced Placement course during high school. The table below shows the calculation of the AP statistic for the Classes of 2004 through 2013 at Conard and Hall. In this calculation we look at graduating seniors who were enrolled in West Hartford Public Schools at the start of their 9<sup>th</sup> grade year and count how many successfully completed 1 or more AP courses during their years in West Hartford Public Schools. Successfully completed was defined as earning a C or higher in the AP course. At Conard we saw a record high level with 82% of the Class of 2013 successfully completing an AP course. At Hall, the strong performance continues with 72% of 2013 graduates successfully completing one or more AP courses. We have met this Board performance indicator seven straight years at both high schools (it was 60% for class of 2011 and earlier).

| School | Year          | Grads who entered as 9 <sup>th</sup> graders | Number of grads who successfully completed 1 or more AP courses | Percent |
|--------|---------------|--|---|---------|
| Conard | Class of 2004 | 260  | 144   | 55%     |
|        | Class of 2005 | 281  | 146   | 52%     |
|        | Class of 2006 | 276  | 163   | 59%     |
|        | Class of 2007 | 318  | 226   | 71%     |
|        | Class of 2008 | 283  | 182   | 64%     |
|        | Class of 2009 | 273  | 194   | 71%     |
|        | Class of 2010 | 315  | 226   | 72%     |
|        | Class of 2011 | 338  | 241   | 71%     |
|        | Class of 2012 | 300  | 209   | 70%     |
|        | Class of 2013 | 355  | 290   | 82%     |
| Hall   | Class of 2004 | 308  | 185   | 60%     |
|        | Class of 2005 | 319  | 190   | 60%     |
|        | Class of 2006 | 317  | 198   | 62%     |
|        | Class of 2007 | 353  | 249   | 71%     |
|        | Class of 2008 | 323  | 212   | 66%     |
|        | Class of 2009 | 354  | 250   | 71%     |
|        | Class of 2010 | 340  | 232   | 68%     |
|        | Class of 2011 | 341  | 252   | 74%     |
|        | Class of 2012 | 353  | 257   | 73%     |
|        | Class of 2013 | 332  | 239   | 72%     |

## Number of AP Exams taken by Subject Area

|                       | 2005        | 2006        | 2007        | 2008        | 2009        | 2010        | 2011        | 2012        | 2013        |
|-----------------------|-------------|-------------|-------------|-------------|-------------|-------------|-------------|-------------|-------------|
| Art (Drawing/General) | 19          | 13          | 7           | 6           | 21          | 40          | 28          | 32          | 26          |
| Biology               | 181         | 189         | 115         | 110         | 130         | 96          | 131         | 104         | 112         |
| Calculus - AB         | 35          | 60          | 78          | 98          | 93          | 116         | 123         | 107         | 127         |
| Calculus - BC         | 29          | 34          | 27          | 27          | 34          | 25          | 34          | 43          | 43          |
| Chemistry             | 40          | 85          | 74          | 68          | 70          | 84          | 82          | 81          | 79          |
| Chinese Language      |             |             |             |             |             |             |             | 5           | 1           |
| Computer Science A    |             |             |             |             |             |             |             |             | 34          |
| Economics - Macro     | 53          | 30          | 47          | 53          | 70          | 65          | 85          | 61          | 76          |
| Economics - Micro     | 48          | 30          | 45          | 53          | 52          | 77          | 85          | 61          | 76          |
| English Lit. & Comp.  | 102         | 116         | 101         | 155         | 144         | 182         | 192         | 191         | 174         |
| English Language      | 171         | 205         | 201         | 210         | 244         | 221         | 203         | 256         | 198         |
| Environmental Science |             |             | 35          | 36          | 47          | 62          | 88          | 95          | 144         |
| European History      | 103         | 64          | 72          | 80          | 56          | 47          | 156         | 85          | 75          |
| French Language       | 25          | 34          | 49          | 40          | 37          | 43          | 39          | 37          | 61          |
| Physics B             | 47          | 48          | 40          | 54          | 48          | 51          | 74          | 50          | 54          |
| Psychology            | 115         | 151         | 202         | 162         | 190         | 247         | 322         | 275         | 276         |
| Spanish Language      | 53          | 79          | 81          | 97          | 106         | 88          | 79          | 102         | 92          |
| Spanish Literature    | 15          | 7           | 16          | 8           | 25          | 15          | 17          | 14          | 16          |
| Statistics            | 44          | 42          | 55          | 41          | 56          | 79          | 69          | 48          | 59          |
| US Govn & Politics    |             |             |             |             |             |             |             | 115         | 125         |
| U.S. History          | 131         | 171         | 161         | 196         | 188         | 204         | 171         | 207         | 155         |
| Other                 | 18          | 19          | 31          | 20          | 27          | 20          | 14          | 14          | 12          |
| <b>Total</b>          | <b>1229</b> | <b>1377</b> | <b>1437</b> | <b>1514</b> | <b>1638</b> | <b>1762</b> | <b>1992</b> | <b>1983</b> | <b>2015</b> |

## AP Exam Scores - Historical Summary

### Conard High School

| <u>Year</u> | <u>Subjects</u> | <u>Exams</u> | <u>Avg Score</u> | <u>Percent<br/>3 or higher</u> | <u>Candidates</u> | <u>11-12<br/>Enrollment</u> | <u>Participation<br/>Rate</u> | <u>State<br/>Rank</u> | <u>AP Equity &amp;<br/>Excellence</u> |
|-------------|-----------------|--------------|------------------|--------------------------------|-------------------|-----------------------------|-------------------------------|-----------------------|---------------------------------------|
| 1994        | 11              | 204          | 2.99             | 63%                            | 173               | 473                         | 36.6%                         | 1st                   |                                       |
| 1995        | 11              | 249          | 3.07             | 64%                            | 186               | 503                         | 37.0%                         | 2nd                   |                                       |
| 1996        | 11              | 203          | 3.14             | 71%                            | 146               | 532                         | 27.4%                         | 6th                   |                                       |
| 1997        | 11              | 198          | 3.44             | 80%                            | 153               | 571                         | 26.8%                         | 4th                   |                                       |
| 1998        | 14              | 257          | 3.04             | 66%                            | 181               | 619                         | 29.2%                         | 6th                   |                                       |
| 1999        | 17              | 381          | 3.31             | 76%                            | 238               | 601                         | 39.6%                         | 2nd                   |                                       |
| 2000        | 17              | 434          | 3.24             | 74%                            | 257               | 633                         | 40.6%                         | 3rd                   |                                       |
| 2001        | 19              | 544          | 3.08             | 67%                            | 320               | 681                         | 47.0%                         | 2nd                   |                                       |
| 2002        | 20              | 587          | 3.13             | 72%                            | 322               | 710                         | 45.4%                         | 2nd                   |                                       |
| 2003        | 22              | 575          | 3.21             | 74%                            | 333               | 669                         | 49.8%                         | 2nd                   |                                       |
| 2004        | 21              | 521          | 3.36             | 75%                            | 314               | 627                         | 50.1%                         | 3rd                   |                                       |
| 2005        | 21              | 663          | 3.23             | 71%                            | 384               | 646                         | 59.4%                         | 1st                   | 38.4%                                 |
| 2006        | 21              | 776          | 3.24             | 71%                            | 417               | 678                         | 61.5%                         | 1st                   | 49.4%                                 |
| 2007        | 26              | 778          | 3.25             | 74%                            | 407               | 697                         | 58.4%                         | 1st                   | 47.8%                                 |
| 2008        | 23              | 887          | 3.09             | 68%                            | 433               | 652                         | 66.4%                         |                       | 50.6%                                 |
| 2009        | 22              | 961          | 3.21             | 71%                            | 482               | 681                         | 70.8%                         | 1st                   | 52.7%                                 |
| 2010        | 23              | 978          | 3.26             | 73%                            | 512               | 747                         | 68.5%                         | 1st                   | 58.7%                                 |
| 2011        | 23              | 1104         | 3.11             | 69%                            | 547               | 726                         | 75.3%                         | 2nd                   | 57.5%                                 |
| 2012        | 22              | 1112         | 3.23             | 73%                            | 570               | 727                         | 78.4%                         | 1st                   | 54.5%                                 |
| 2013        | 23              | 1188         | 3.15             | 70%                            | 582               | 756                         | 77.0%                         |                       | 63.9%                                 |

### Hall High School

| <u>Year</u> | <u>Subjects</u> | <u>Exams</u> | <u>Avg Score</u> | <u>Percent<br/>3 or higher</u> | <u>Candidates</u> | <u>11-12<br/>Enrollment</u> | <u>Participation<br/>Rate</u> | <u>State<br/>Rank</u> | <u>AP Equity &amp;<br/>Excellence</u> |
|-------------|-----------------|--------------|------------------|--------------------------------|-------------------|-----------------------------|-------------------------------|-----------------------|---------------------------------------|
| 1994        | 16              | 283          | 3.63             | 86%                            | 189               | 559                         | 33.8%                         | 2nd                   |                                       |
| 1995        | 18              | 363          | 3.64             | 84%                            | 209               | 486                         | 43.0%                         | 1st                   |                                       |
| 1996        | 14              | 396          | 3.48             | 81%                            | 227               | 553                         | 41.0%                         | 1st                   |                                       |
| 1997        | 15              | 425          | 3.68             | 88%                            | 232               | 563                         | 41.2%                         | 1st                   |                                       |
| 1998        | 18              | 406          | 3.69             | 85%                            | 234               | 604                         | 38.7%                         | 1st                   |                                       |
| 1999        | 19              | 498          | 3.66             | 84%                            | 270               | 583                         | 46.3%                         | 1st                   |                                       |
| 2000        | 18              | 507          | 3.62             | 83%                            | 305               | 596                         | 51.2%                         | 1st                   |                                       |
| 2001        | 23              | 536          | 3.60             | 84%                            | 294               | 678                         | 43.4%                         | 4th                   |                                       |
| 2002        | 22              | 569          | 3.77             | 89%                            | 300               | 691                         | 43.4%                         | 3rd                   |                                       |
| 2003        | 18              | 472          | 3.82             | 88%                            | 271               | 718                         | 37.7%                         | 9th                   |                                       |
| 2004        | 18              | 546          | 3.95             | 92%                            | 325               | 739                         | 44.0%                         | 4th                   |                                       |
| 2005        | 22              | 566          | 3.75             | 86%                            | 337               | 731                         | 46.1%                         | 4th                   | 46.3%                                 |
| 2006        | 21              | 601          | 3.84             | 89%                            | 358               | 745                         | 48.1%                         | 4th                   | 47.9%                                 |
| 2007        | 23              | 668          | 3.81             | 88%                            | 379               | 769                         | 49.3%                         | 7th                   | 54.0%                                 |
| 2008        | 20              | 627          | 3.82             | 87%                            | 343               | 754                         | 45.5%                         |                       | 44.7%                                 |
| 2009        | 22              | 677          | 3.88             | 87%                            | 371               | 763                         | 48.6%                         | 6th                   | 50.4%                                 |
| 2010        | 23              | 784          | 3.43             | 76%                            | 397               | 781                         | 50.8%                         | 9th                   | 52.4%                                 |
| 2011        | 23              | 888          | 3.38             | 74%                            | 457               | 779                         | 58.7%                         | 5th                   | 46.6%                                 |
| 2012        | 25              | 871          | 3.55             | 78%                            | 444               | 770                         | 57.7%                         | 6th                   | 51.2%                                 |
| 2013        | 25              | 827          | 3.52             | 79%                            | 453               | 742                         | 61.1%                         |                       | 53.1%                                 |

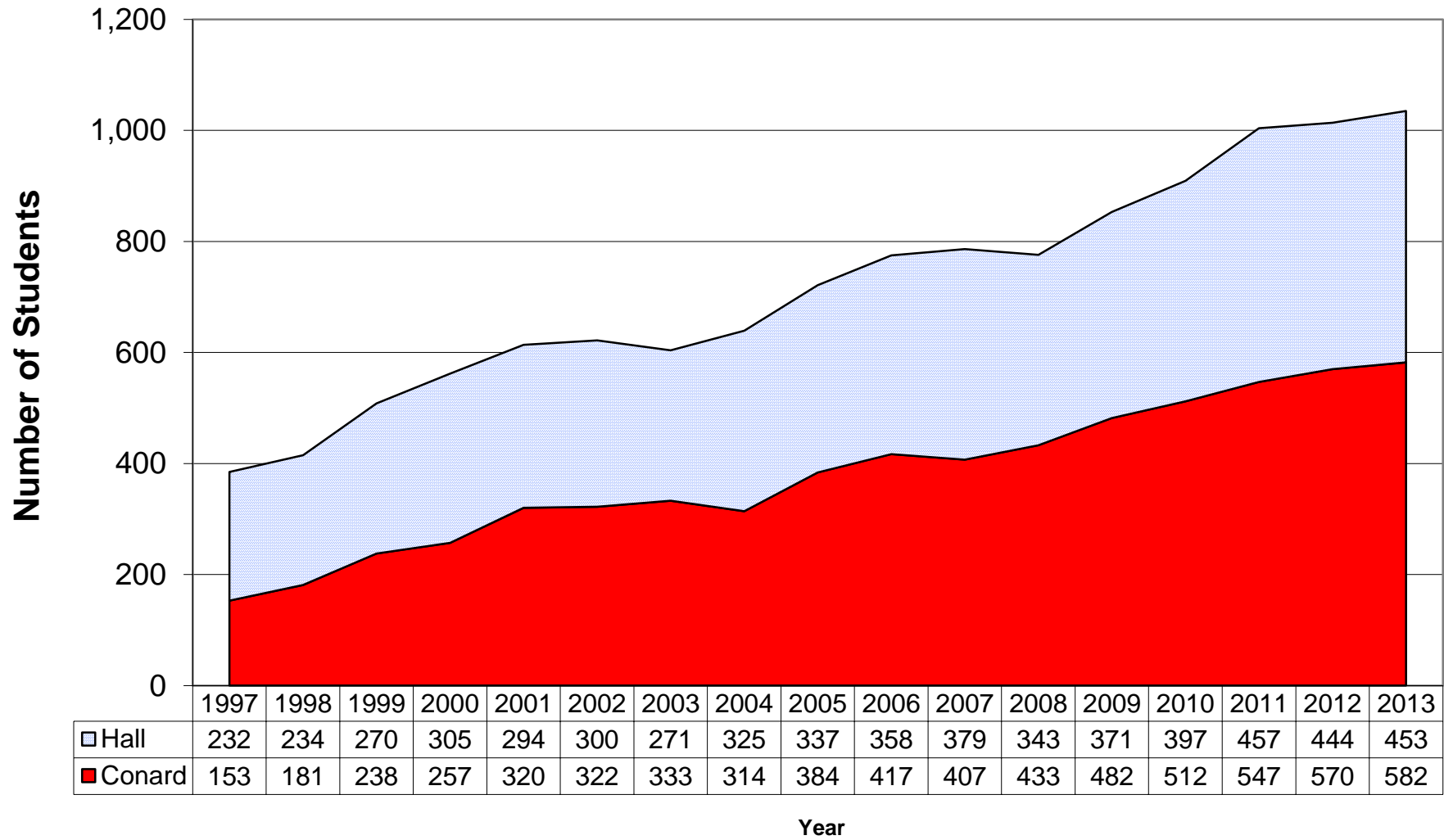
# AP Exam Scores - Historical Summary

## West Hartford Public Schools

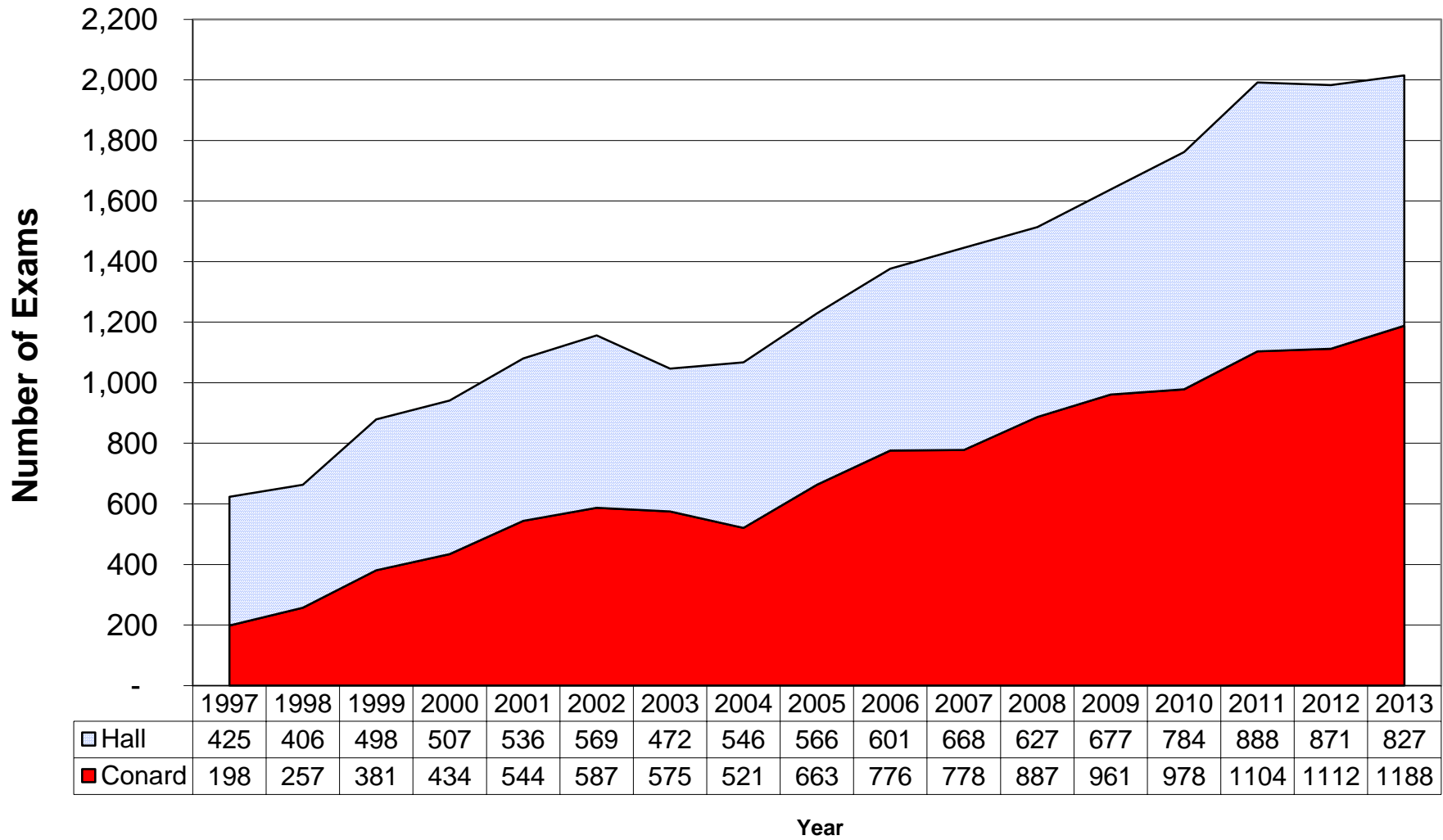
| <u>Year</u> | <u>Subjects</u> | <u>Exams</u> | <u>Avg Score</u> | <u>Percent<br/>3 or<br/>higher</u> | <u>Candidates</u> | <u>11-12<br/>Enrollment</u> | <u>Participation<br/>Rate</u> | <u>State<br/>Rank</u> | <u>AP Equity &amp;<br/>Excellence</u> |
|-------------|-----------------|--------------|------------------|------------------------------------|-------------------|-----------------------------|-------------------------------|-----------------------|---------------------------------------|
| 1994        | 16              | 487          | 3.36             | 76%                                | 362               | 1032                        | 35.1%                         | 1st                   |                                       |
| 1995        | 18              | 612          | 3.41             | 76%                                | 395               | 989                         | 39.9%                         | 1st                   |                                       |
| 1996        | 14              | 599          | 3.36             | 78%                                | 373               | 1085                        | 34.4%                         | 2nd                   |                                       |
| 1997        | 15              | 623          | 3.60             | 85%                                | 385               | 1134                        | 34.0%                         | 1st                   |                                       |
| 1998        | 18              | 663          | 3.44             | 78%                                | 415               | 1223                        | 33.9%                         | 3rd                   |                                       |
| 1999        | 19              | 879          | 3.51             | 81%                                | 508               | 1184                        | 42.9%                         | 1st                   |                                       |
| 2000        | 18              | 941          | 3.44             | 79%                                | 562               | 1229                        | 45.7%                         | 1st                   |                                       |
| 2001        | 24              | 1080         | 3.34             | 75%                                | 614               | 1359                        | 45.2%                         | 1st                   |                                       |
| 2002        | 24              | 1156         | 3.44             | 80%                                | 622               | 1401                        | 44.4%                         | 2nd                   |                                       |
| 2003        | 22              | 1047         | 3.49             | 80%                                | 604               | 1387                        | 43.5%                         | 5th                   |                                       |
| 2004        | 22              | 1067         | 3.66             | 84%                                | 639               | 1366                        | 46.8%                         | 3rd                   |                                       |
| 2005        | 22              | 1229         | 3.47             | 78%                                | 721               | 1377                        | 52.4%                         | 2nd                   | 42.4%                                 |
| 2006        | 22              | 1377         | 3.50             | 79%                                | 775               | 1423                        | 54.5%                         | 1st                   | 48.7%                                 |
| 2007        | 29              | 1446         | 3.51             | 80%                                | 786               | 1466                        | 53.6%                         | 2nd                   | 50.9%                                 |
| 2008        | 25              | 1514         | 3.39             | 76%                                | 776               | 1406                        | 55.2%                         |                       | 47.7%                                 |
| 2009        | 26              | 1638         | 3.49             | 78%                                | 853               | 1444                        | 59.1%                         | 4th                   | 51.6%                                 |
| 2010        | 27              | 1762         | 3.33             | 75%                                | 909               | 1528                        | 59.5%                         | 4th                   | 55.6%                                 |
| 2011        | 25              | 1992         | 3.23             | 71%                                | 1,004             | 1505                        | 66.7%                         | 2nd                   | 52.1%                                 |
| 2012        | 27              | 1983         | 3.37             | 75%                                | 1,014             | 1497                        | 67.7%                         | 1st                   | 52.9%                                 |
| 2013        | 26              | 2015         | 3.30             | 74%                                | 1,035             | 1498                        | 69.1%                         |                       | 59.1%                                 |



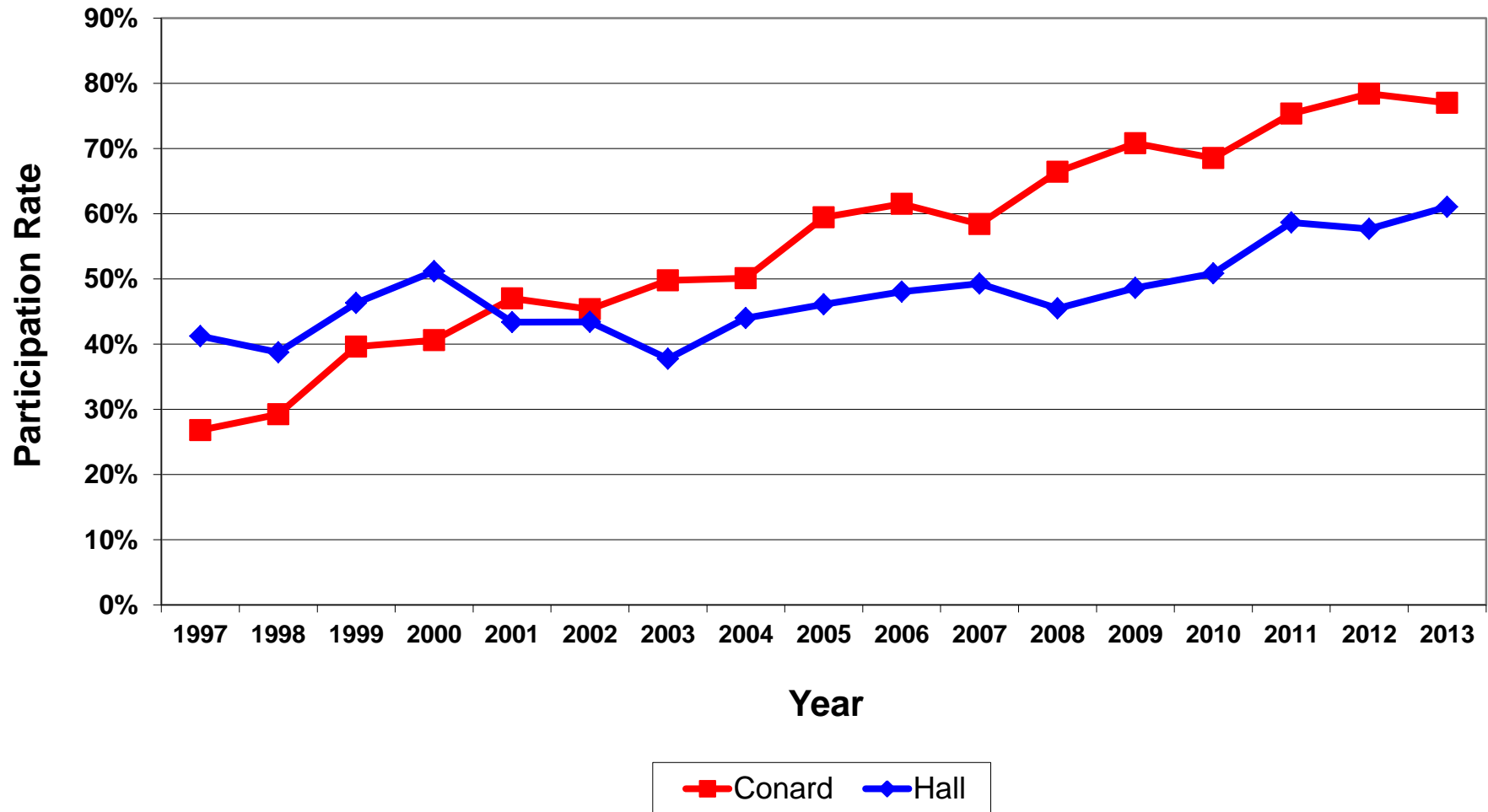
## Number of Students Taking AP Exams



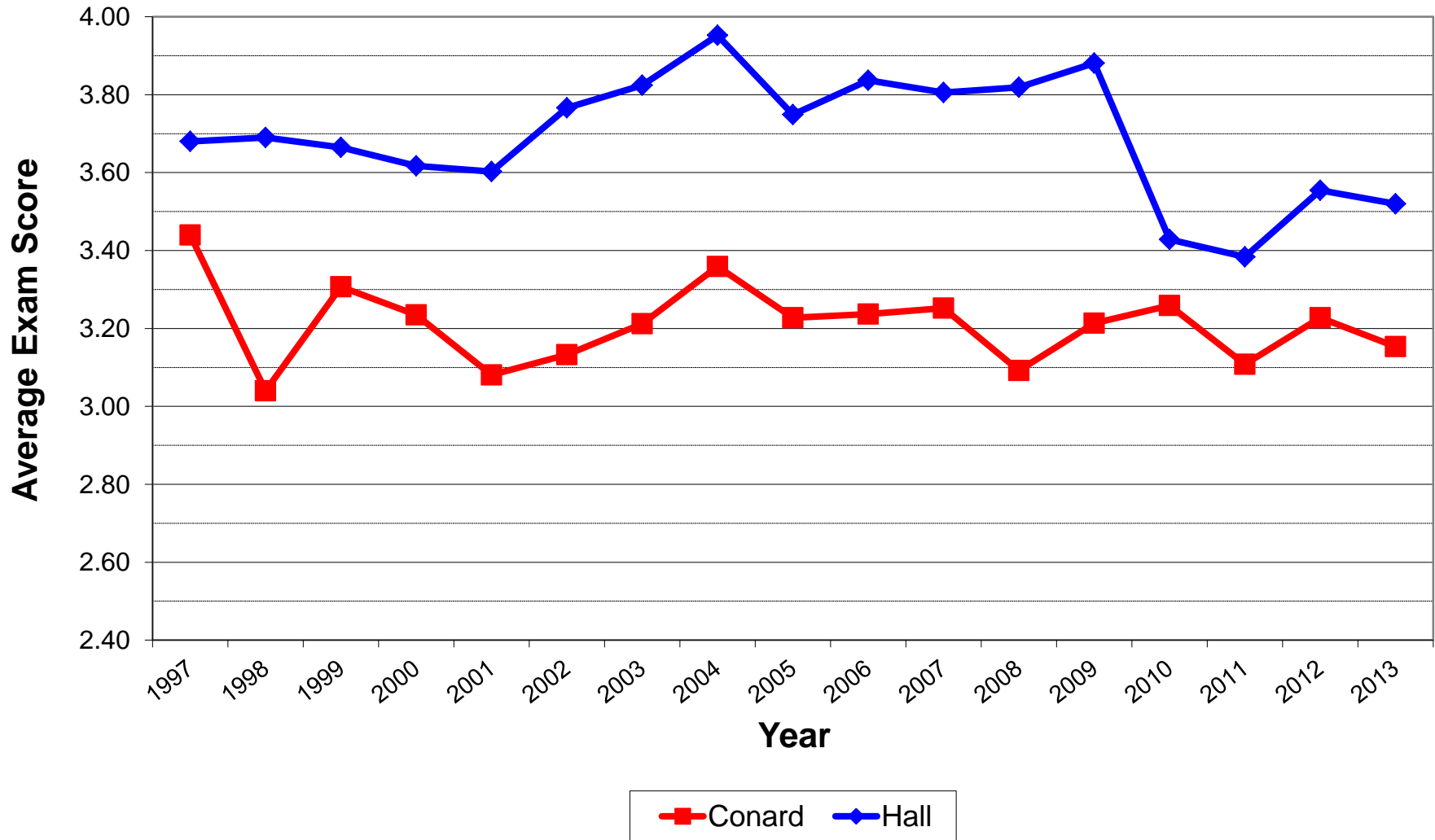
## Number of AP Exams Taken



## "Participation" Rate - Number of students taking an AP exam/Number of 11th and 12th graders



# Average AP Exam Score



## SAT/ACT Scores:

The SAT and ACT are tests that our high school students take as part of the college admission process. They are used by many colleges as one factor in the college's evaluation of a student's suitability for their school. The tests measure the student's abilities in the areas of Critical Reading, Math, Writing, and Science (on the ACT). As a norm-referenced test, the tests are specifically designed to rank the students against the national population. Unlike the AP tests, the SAT/ACT test questions are not reflective of any specific curriculum or coursework at our high schools. The table below summarizes the SAT and ACT results for the last five years.

### SAT Test Results

| Class of | Conard  |      |         | Hall    |         |      |         |         |
|----------|---------|------|---------|---------|---------|------|---------|---------|
|          | N/%     | Math | Reading | Writing | N/%     | Math | Reading | Writing |
| 2009     | 278/88% | 535  | 537     | 543     | 322/83% | 559  | 563     | 561     |
| 2010     | 311/85% | 516  | 522     | 524     | 317/81% | 549  | 556     | 553     |
| 2011     | 329/89% | 529  | 533     | 535     | 318/83% | 559  | 555     | 554     |
| 2012     | 285/84% | 518  | 520     | 520     | 322/84% | 556  | 547     | 553     |
| 2013     | 370/91% | 529  | 526     | 530     | 314/84% | 543  | 544     | 546     |

### ACT Test Results

| Class of | Conard  |      | Hall    |      |
|----------|---------|------|---------|------|
|          | N/%     | Ave  | N/%     | Ave  |
| 2009     | 94/30%  | 23.3 | 140/36% | 24.2 |
| 2010     | 122/33% | 23.4 | 156/40% | 24.6 |
| 2011     | 130/35% | 24.2 | 180/47% | 24.0 |
| 2012     | 97/29%  | 23.1 | 183/48% | 24.1 |
| 2013     | 169/42% | 23.8 | 165/44% | 24.2 |